



METAL FORM MANUFACTURING CO., INC
 5960 WEST WASHINGTON STREET
 PHOENIX, ARIZONA 85043
 TELEPHONE: 602-233-1211 FAX: 602-233-2033
 WEBSITE ADDRESS: WWW.MFMCA.COM

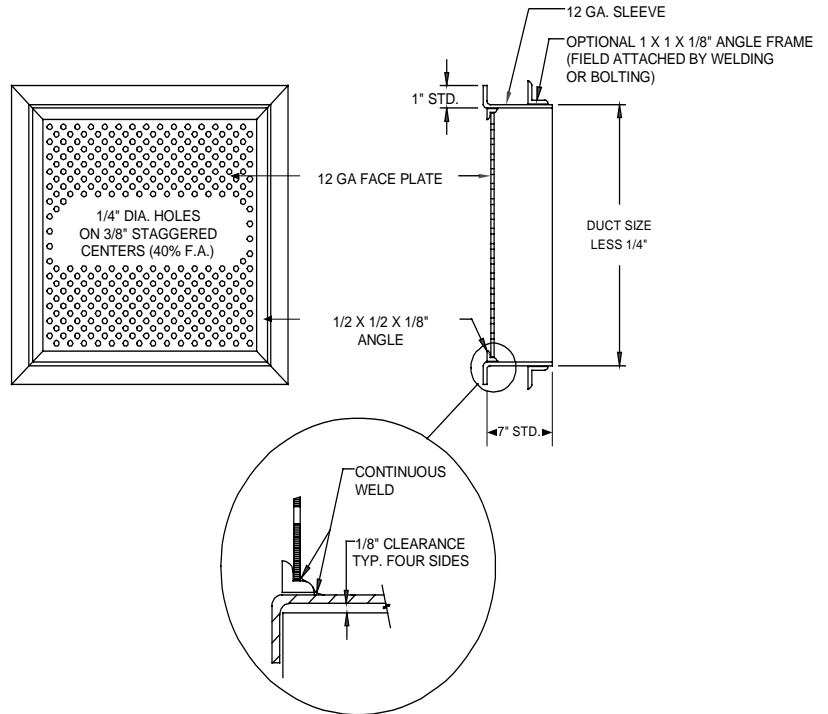
Model MFX-85 Security Grille Primed Steel

Specifications

- Frame:** 12ga. x 7" deep steel sleeve with 1" flange turned out on face.
- Grille:** 12ga. steel plate continuously welded to perimeter mounting angles at face.
- Finish:** One coat MFM prime.
- Minimum size:** 6"w x 6"h.
- Maximum size:** 48"w x 48"h.

Options

- Flange size.
- Rear flange.
- Sleeve depths.
- Grilles - Many variations of grilles are available, consult factory.
- Damper.
- 1/2" Diameter steel concrete anchors.
- Finishes.



Notes

1. Width x height are nominal opening dimensions. Unless specified otherwise, units will be constructed 1/4" less.
2. Metal Form reserves the right to improve design or change specifications at any time.

Tag	Qty.	Width	Height	Length	Options	Finishes/Specify	Remarks

Project: _____
Architect: _____
Engineer: _____
Contractor: _____