



METAL FORM MANUFACTURING CO., INC  
 5960 WEST WASHINGTON STREET  
 PHOENIX, ARIZONA 85043  
 TELEPHONE: 602-233-1211 FAX: 602-233-2033  
 WEBSITE ADDRESS: WWW.MFMCA.COM

# Model MFLA-8-36 Fabricated Acoustical Louver 8" Deep Plain Blade

## Specifications

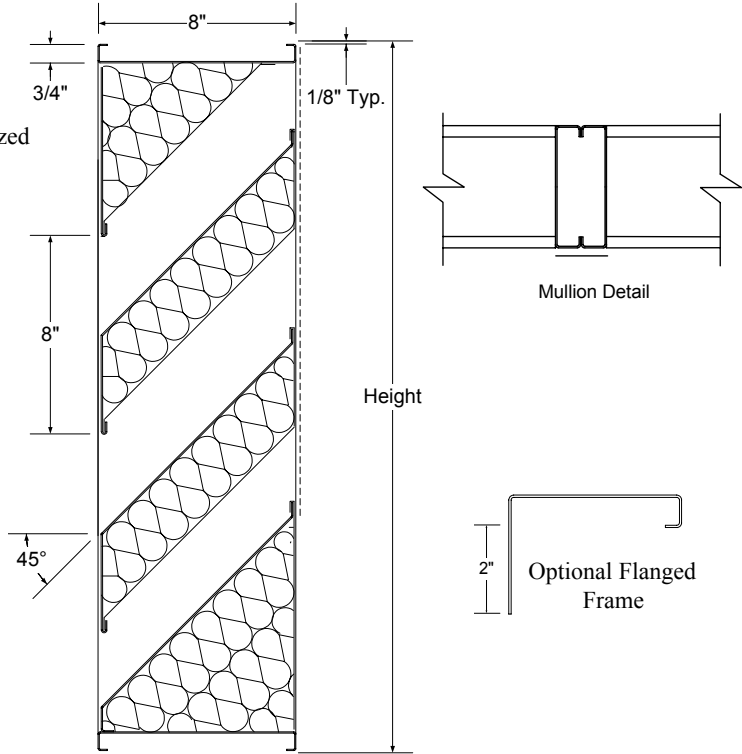
- Frame:** 16ga. galvanized channel frame.
- Blades:** 16ga. galvanized steel / 22ga. galvanized perforated liner.
- Insulation:** 2 lb. density fiberglass.
- Screen:** 1/2" x 1/2" x 19ga. galvanized mesh.
- Finish:** Standard mill.
- Minimum size:** 12"w x 18"h.
- Maximum size:** 72"w x 96"h.  
Multiple section - unlimited size.

## Options

- Flanged frame.
- Sill extension.
- Sleeves.
- Sub frame (requires flanged louver).
- Screens - Many variations of screens are available, consult factory.
- Finishes - Many types of finishes are available, consult factory.
- Other options are available, consult factory.

## Notes

1. Width x height are nominal opening dimensions. Unless specified otherwise, units will be constructed 1/4" undersize.
2. Metal Form reserves the right to improve design or change specifications at any time.



Section View

Octave Band/Frequency, Hz	1/63	2/125	3/250	4/500	5/1k	6/2k	7/4k	8/8k
Transmission Loss, dB	3	7	9	11	14	15	11	8
Noise Reduction, dB	9	12	15	16	18	20	18	14

Tag	Qty.	Width	Height	No. of Panels (W x H)	Options	Finishes/Specify	Remarks

**Project:** \_\_\_\_\_  
**Architect:** \_\_\_\_\_  
**Engineer:** \_\_\_\_\_  
**Contractor:** \_\_\_\_\_

©2010 Metal Form Manufacturing Co., Inc.  
 Form No. LA-8-3610

Refer to back page for performance data.

